

1. Wireless Wi-Fi Distribution Network

1.1 APP Download

Method 1

Scan the QR code on the right, download the app.



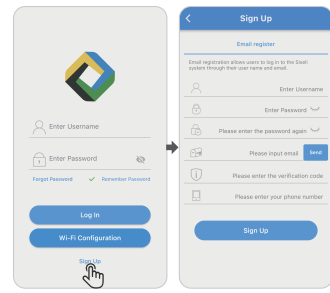
Method 2

Scan the QR code of the film on the collector.

Method 3

Search in the application market to download the APP named "Solar of Things" for download.

1.2 Registered Account

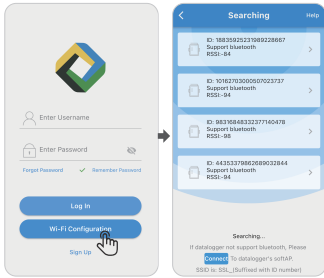


- On the App home page, click the "Sign Up" button, fill in the relevant information according to the prompt, and complete the registration.

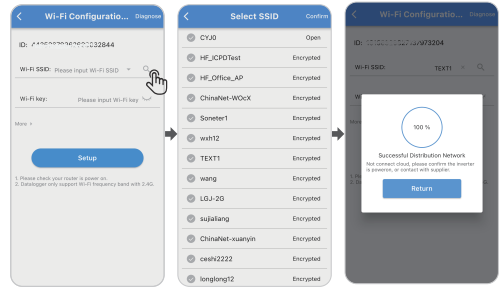
2. Supporting Network And Adding Device

2.1 Wi-Fi Collector Connection Router

- After the PWR indicator on the collector is on, turn on the mobile phone Bluetooth and Solar of Things App, click the "Wi-Fi Configuration" button to enter the "Searching" page, and the page will automatically display the nearby Bluetooth device.



- Select the collector that needs to be distributed, enter the matching webpage, and click the search icon. You can choose the Wi-Fi hotspot name.

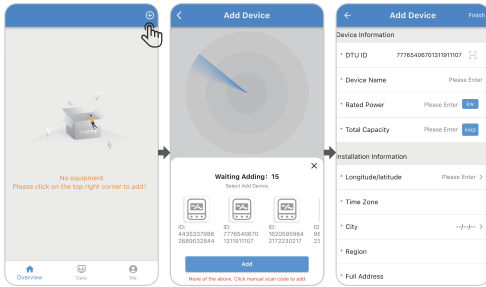


2.2 Add Device

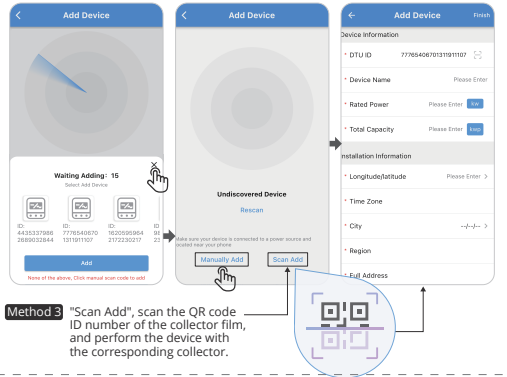
- Enter the homepage of the APP, click "+" in the upper right corner, enter the device to add the page, close the mobile phone close to the device, and the app scan the device automatically.

- After scanning to the device, select the ID that is consistent with the ID of the collector tag, and click "Add"

Note: Please confirm the collector ID before scanning. If the ID information is not found on the surface of the machine, you can view the ID on the matching page.



- "Manually Add", complete the adding device according to the interface prompt manual output collector ID, name and other information.

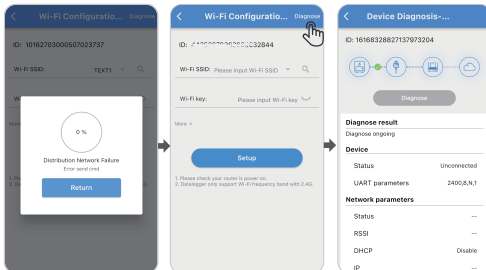


- "Scan Add", scan the QR code ID number of the collector film, and perform the device with the corresponding collector.

3. Collector Fault Diagnose And Indicator Light Judgment

3.1 Collector Fault Diagnose

- After the failure distribution network is completed or failed, you can make a failure diagnosis by clicking on the upper right "Diagnose".



3.2 Collector Indicator Status

PWR (power indicator light):

On: normal power supply
Off: abnormal power supply

COM (serial port transmission indicator):

Off: Number of data interaction
Off for 0.3 seconds, on for 0.9 seconds: serial output data
Off for 0.3 seconds, on for 0.3 seconds: serial port receiving data
On: Two-way receiving and receiving

Net (network status indicator):

Off for 0.3 seconds, on for 3 seconds: STA mode connects the upper router
Off for 0.3 seconds, on for 0.3 seconds: STA is not connected to the upper router

SRV (server connection indicator):

On: Has been connected to the server
Off: Uninterrupted to the server